

Logic Geophysics & Analytics LLC

Capability Statement

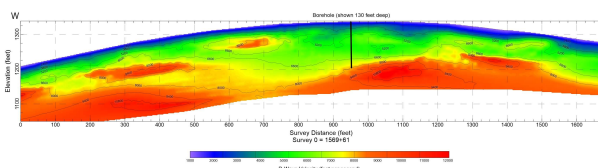


DBE #9900800

Logic Geophysics & Analytics LLC provides near-surface geophysical surveys and data analytics relevant to geotechnical, environmental, and engineering sites. Logic Geophysics is owned and operated by Dr. Esther Babcock, U.S. Air Force retired, a Ph.D.-level geophysicist and expert with near-surface electrical methods. We provide subsurface imaging solutions, from geologic mapping to archaeological surveys to concrete imaging, across the state of Alaska and beyond.

CORE COMPETENCIES

- Ground-penetrating radar, electrical, resistivity, IP, and seismic surveys
- Integrated geophysical imaging and advanced data analysis for robust site characterization
- Scientific research and technical consulting

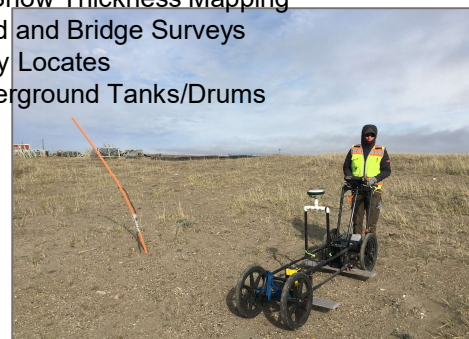


DIFFERENTIATORS

- Safety and Service mindset
- Technical Expertise:
 - Ph.D. Geophysics
 - The GPR experts in Alaska
- Remote Site Expertise:
 - From Alaska to Antarctica
- Extreme Geophysics:
 - From extreme cold to extreme terrain to extremely remote sites

APPLICATIONS

- Contaminated Site Surveys
- Gravel Exploration
- Archaeological Surveys
- Metal Detection
- Geologic Mapping
- Concrete and Rebar Imaging
- Ice/Snow Thickness Mapping
- Road and Bridge Surveys
- Utility Locates
- Underground Tanks/Drums



PREVIOUS CLIENTS

AECOM, AK DOT&PF, Anchorage ML&P, BP Alaska, Brice Environmental Services Corporation, Clean Harbors Exploration Services, ConocoPhillips Alaska, Flint Hills Resources, Geokinetics, Inc., Municipality of Anchorage, National Park Service, Shannon & Wilson, SLR International Corporation, Stantec.

SAMPLE PAST PROJECTS

Gravel Exploration in northern Alaska Using Resistivity Tools:

ConocoPhillips Alaska; North Slope, Alaska

Delineating Asphalt and Base Thicknesses for 312 Miles of

Roads in Alaska Using GPR: Alaska Department of Transportation; Mat-Su, Anchorage, and Kenai Peninsula Roads and Highways

Contaminated Site Investigation at a former Air Force Station in

Alaska: Brice Environmental Services Corporation; Yakutat, Alaska

Ground-Penetrating-Radar Surveys to Locate Unmarked Burials

at the Historic Nome Cemetery: The City of Nome; Nome, Alaska

Seismic Imaging to Understand Subsurface Geology and

Manage Water Quality in Benin, Africa: Geoscientists Without Borders; Benin, Africa

COMPANY DATA

- DUNS 080632815
- AK Business License 1054192
- AKDOT Disadvantaged Business Enterprise

NAICS CODES

541360 Geophysical Surveying and Mapping Services

541620 Environmental Consulting Services

541690 Other scientific and technical consulting

541715 Research and development in physical, engineering, and life sciences

Contact Information

Esther Babcock, Ph.D.

President, Chief Geophysicist

ebabcock@logicgeophysics.com

(907) 744-8111

Anchorage, AK

www.logicgeophysics.com